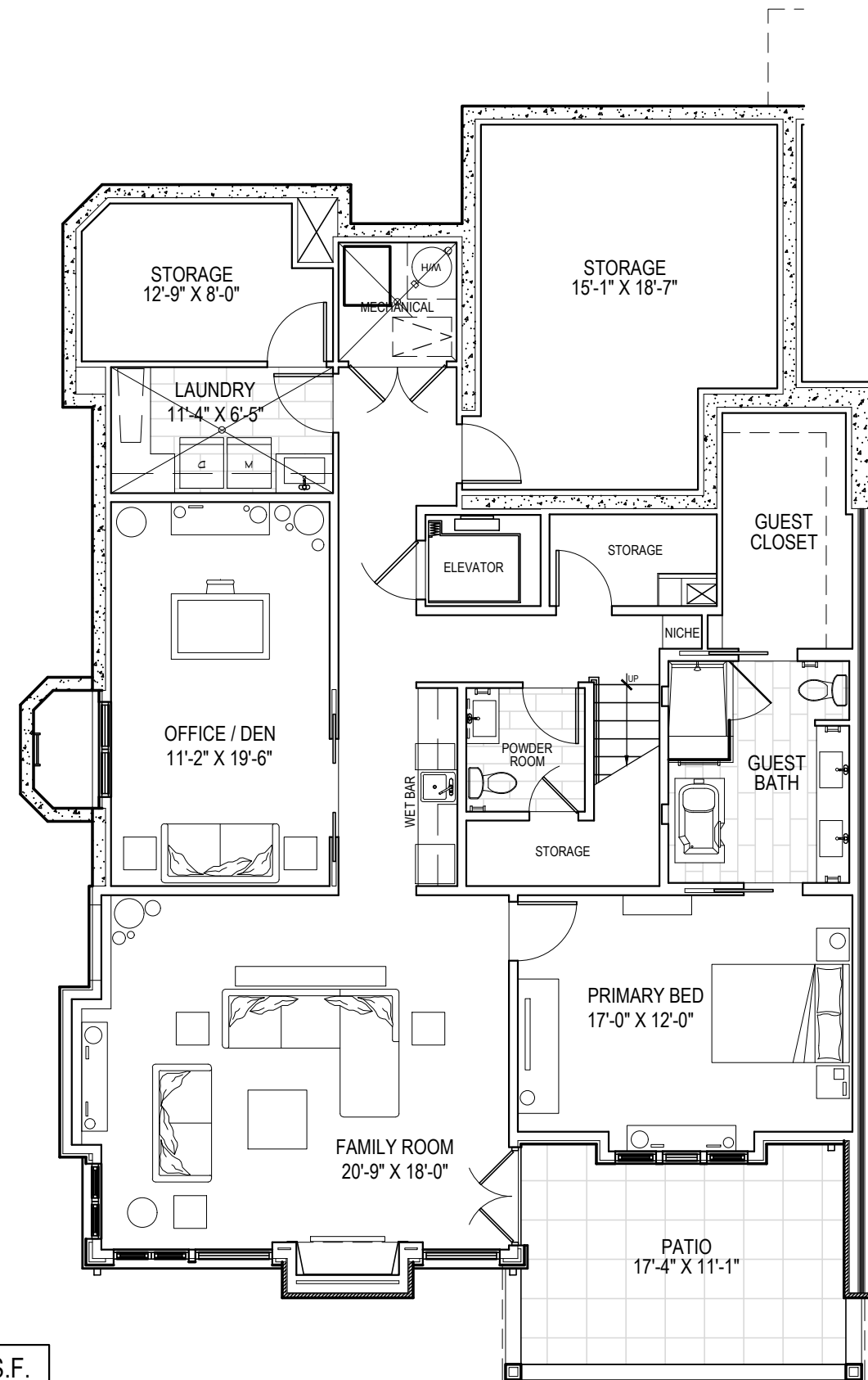
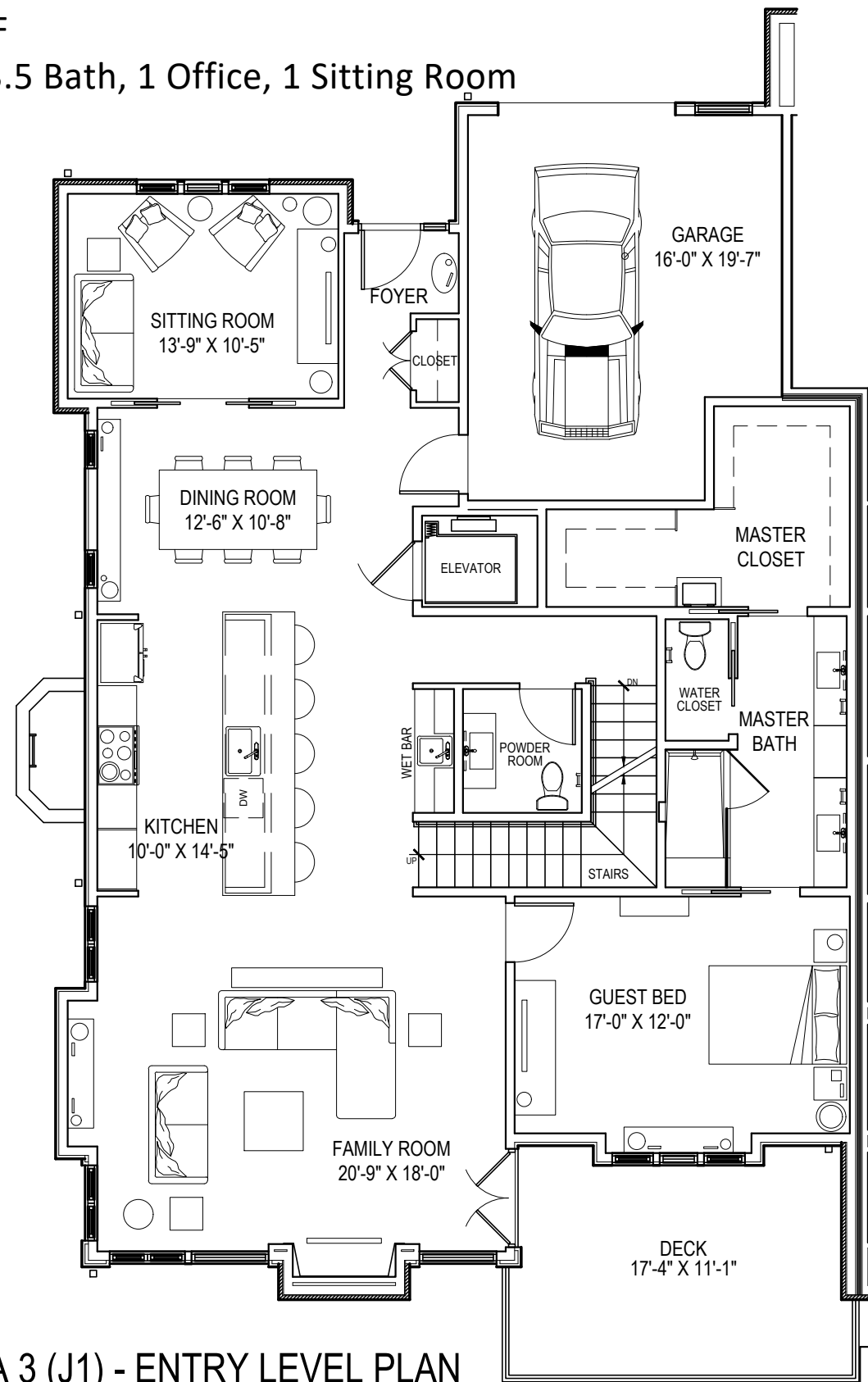


Villa 3

3,898 SF

2 Bed, 3.5 Bath, 1 Office, 1 Sitting Room



VILLA 3 (J1) - ENTRY LEVEL PLAN

SCALE: 1/8" = 1'-0"

85% Refundable Membership: \$3,700,000

2024 Monthly Dues: \$12,065

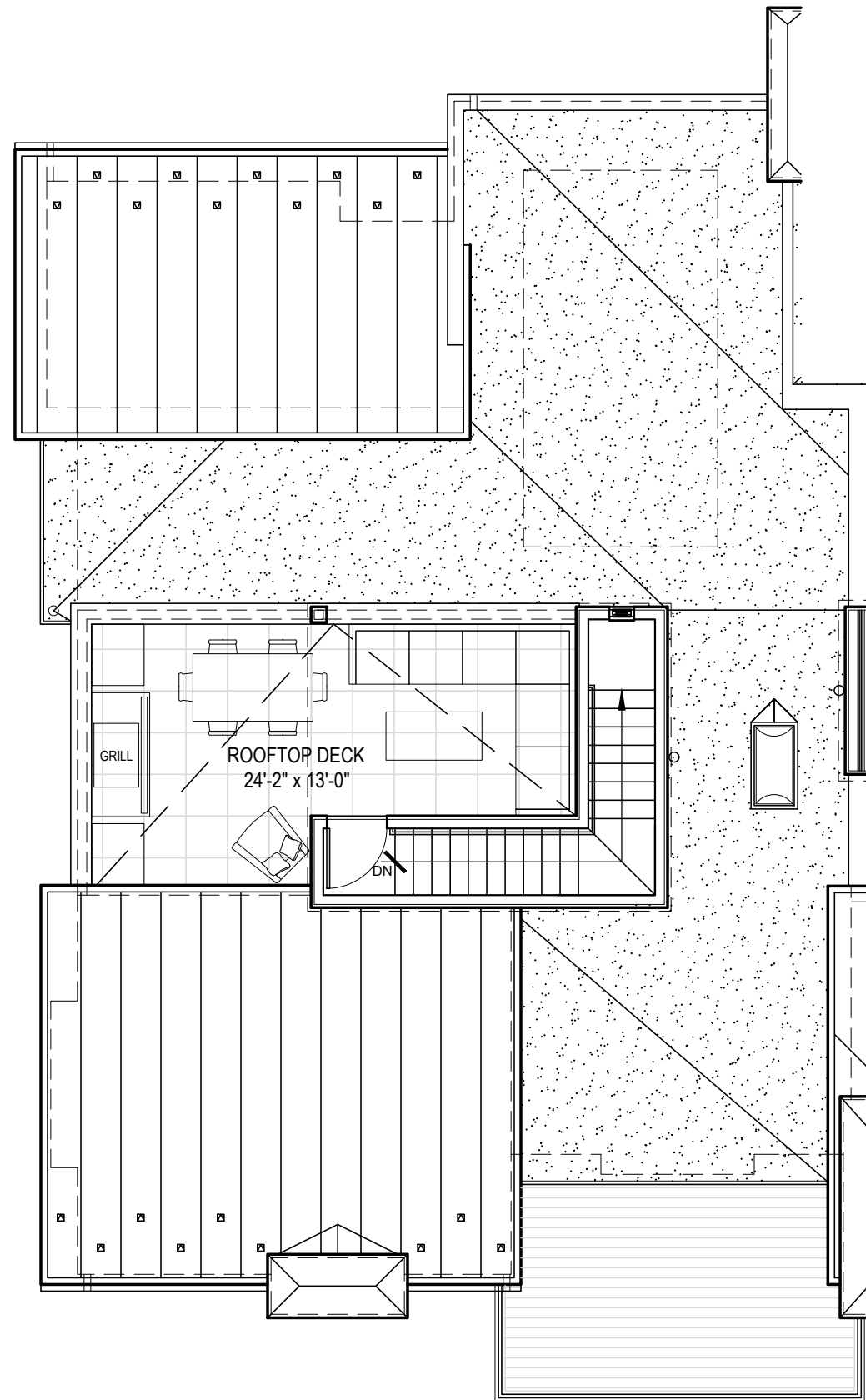
One Time 2nd Person Deposit: \$50,000

2nd Person Monthly Membership: \$800

WALKOUT	1,778 G.S.F.
ENTRY	2,101 G.S.F.
ROOFTOP	19 G.S.F.
TOTAL	3,898 G.S.F.

VILLA 3 (J1) - WALK-OUT LEVEL PLAN

SCALE: 1/8" = 1'-0"



WALKOUT	1,778 G.S.F.
ENTRY	2,101 G.S.F.
ROOFTOP	19 G.S.F.
TOTAL	3,898 G.S.F.

VILLA 3 (J1) - ROOFTOP PLAN

SCALE: 1/8" = 1'-0"